

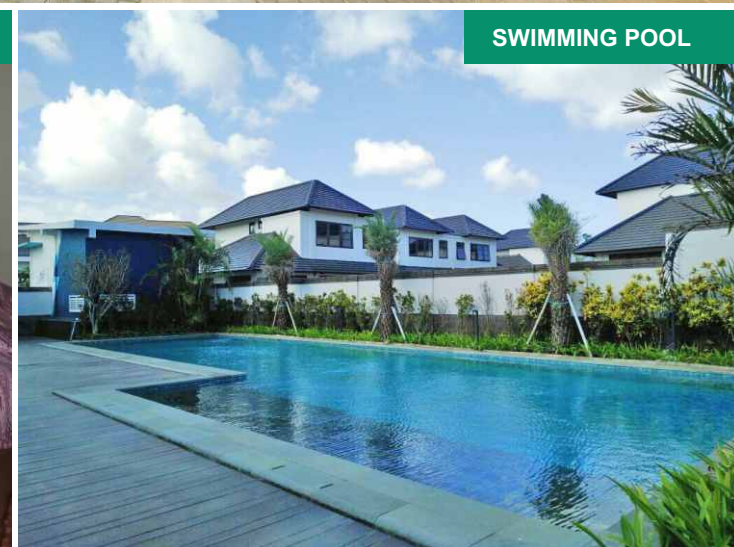
CLUBHOUSE



TIRTA AYU SPA



SWIMMING POOL



GYM CENTER



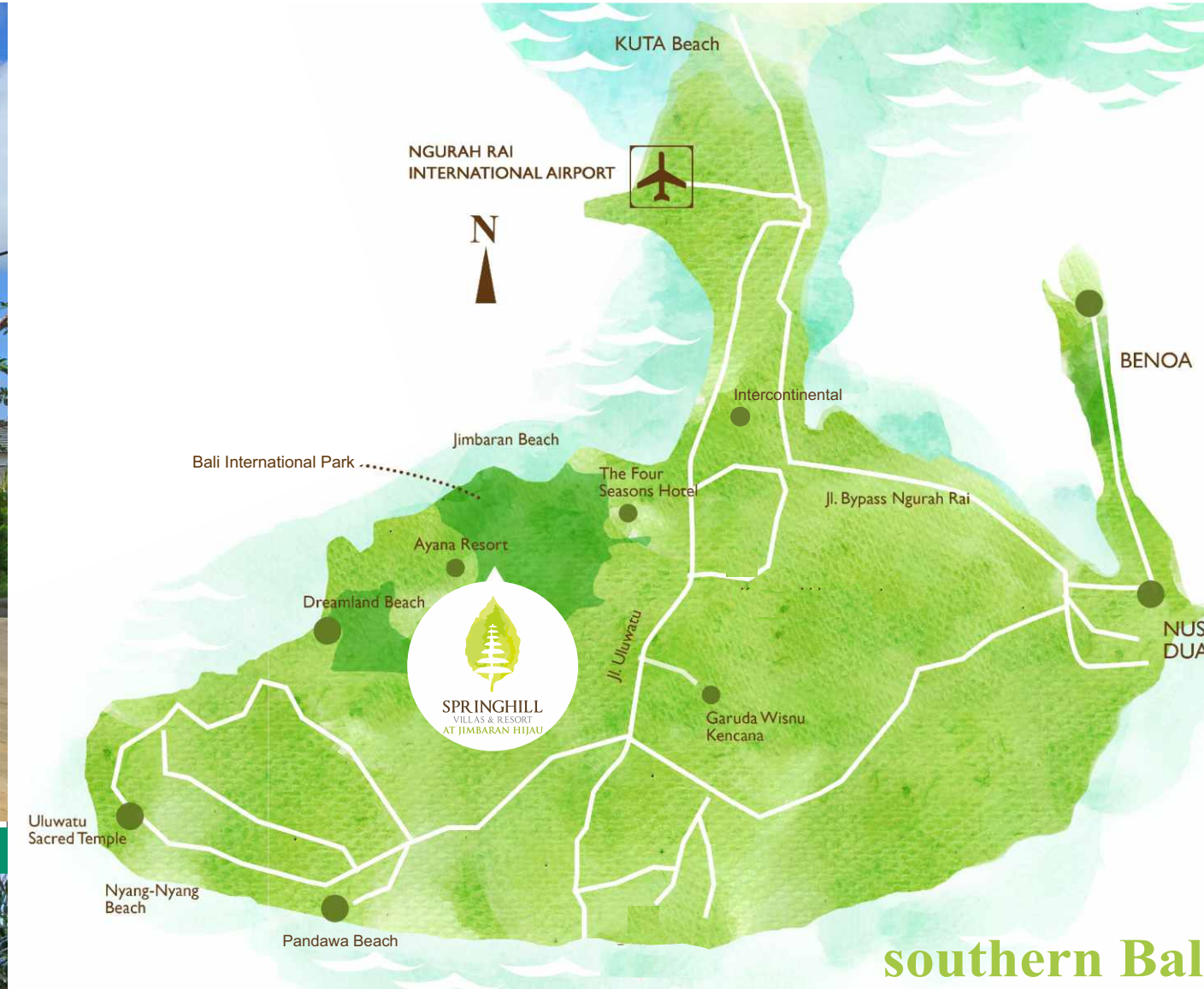
Life at ease

Life has never been easier. Springhill Villas & Resort at Jimbaran Hijau offers facilities that combine comfort and flexibility for your pleasure. Enjoy the magnificent Club House built simply to remind you of the greatness of nature and its potential to soothe your inner soul. 10 minutes drive to the beach.

- FACILITIES :**
- Swimming Pool
 - Club House
 - Spa & Salon (Tirta Ayu Spa)
 - Gym Center

- Royal Tulip Springhill Resort - Jimbaran :
- 7-World Cuisine Restaurant
 - Function Room (Jepun Function Hall)
 - Bar & Lounge
 - Wedding Chapel
 - Kids Play Room
 - Cycling & Jogging Track, Yoga spot

Prime Location In Jimbaran
Bali's Golden Mile



Specifications of the Villas

Living room	Luxurious Marble Flooring	Whatever & Whenever Service
Bedroom	Luxurious Timber Flooring	Wall Split AC in all bedroom
Master Bathroom	Luxurious Marble Walls & Flooring Tempered Glass Shower Cubical Shower by Hans Grohe or equivalent Granite / Marble Vanity Top TOTO Premium Closet or equivalent	Ceiling with Down Light Electricity Supply 3.300 5.500 VA Solid Timber Main Door Frame : Timber / UPVC / aluminium equivalent
Bathroom	Luxurious Homogeneous Tile (Floor/Wall) Granite / Marble Vanity Top Hot Water Installation	Balcony : Solid timber / ceramic PDAM Water Supply - equals Telephone Line
Kitchen	Granite / Marble Vanity Top Hot Water Installation + Water Heater Main Bathroom	Security : 24/7 Hours Security with CCTV Camera Fire Fighting System with Sprinkler and Smoke Detector



Corporate Founding Member of Green Building Council Indonesia



MARKETING GALLERY
Jakarta
Jl. Benyamin Suseb Blok D7, Kemayoran, Jakarta Pusat 14410
021 654 9999
SMS Center +62 817 654 9999
www.springhillgroup.id

Marketing Site Bali
Jl. Jimbaran Hijau Kelod, Kel. Jimbaran, Kab. Badung, Bali
0361 8498 199

All information and specifications are current at time of print and are subject to change as may be required and cannot form part of an offer or contract. All plans are subject to any amendments approved by the relevant authority. Illustrations shall not be regarded as representation of fact. The developer retains full rights to alter or improve images without any prior notice.



a blissful paradise by the hills

The wide variety of villas available at Springhill Villas & Resort at Jimbaran Hijau is tailored to your specific needs. We are fully committed on providing luxury, privacy and a whole range of amenities to ensure a comfortable and pleasant stay to all our guest

MASTER PLAN BALI



SPRINGHILL
VILLAS & RESORT
AT JIMBARAN HIJAU

escape to paradise

enjoy a blissful escapade by the hills of
impressive unspoiled nature

Rosewood

(1BR VILLA)

LT. 98.5 - 192.8 M²
LB. 103.8 M²



Springwood

(2BR VILLA)

LT. 147.54 - 189.96 M²
LB. 108 M²



Oakwood

(3BR VILLA)

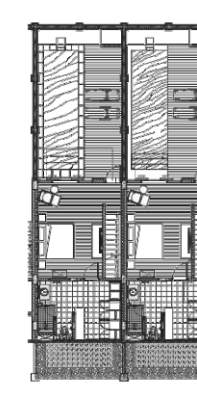
LT. 181.73 - 214.7 M²
LB. 151 M²



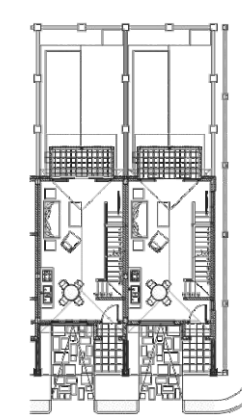
Ironwood

(4BR VILLA)

LT. 218.45 - 442.87 M²
LB. 228 M²

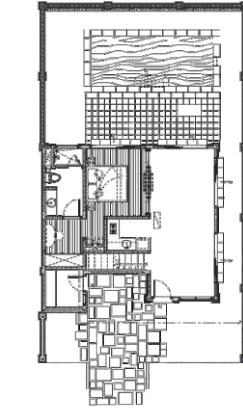


LOWER FLOOR

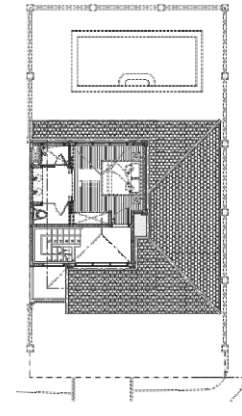


UPPER FLOOR

- 1 Bedroom unit
- 98.5 - 192.8 sq. m (land area), 103.8 sq. m (building area)
- Spacious Living room
- Flooring : Living Room & Bathroom (Marble),
- Bedroom (Parquet Gracewood)
- 1 Bathroom
- Spacious Balcony
- AC : 1, water heater ready, internet & tv cable ready (installation only)
- Interior & Furniture not included

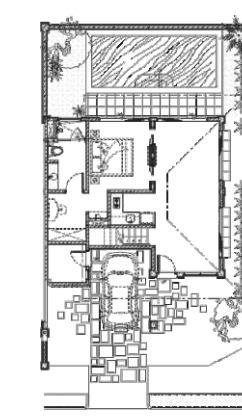


LOWER FLOOR

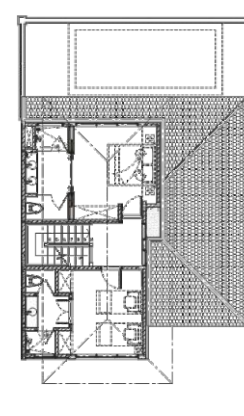


UPPER FLOOR

- 2 Bedroom unit
- 147.54 - 189.96 sq. m (land area), 108 sq. m (building area)
- Spacious Living room
- Flooring : Living room & Main Bathroom (Marble),
- Bedroom (Parquet Gracewood), Second Bathroom (Homogenous tile)
- 2 Bathroom
- AC : 2, water heater ready, internet & tv cable ready (installation only)
- Interior & Furniture not include

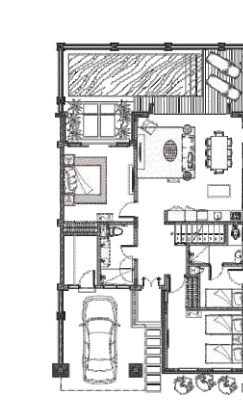


LOWER FLOOR

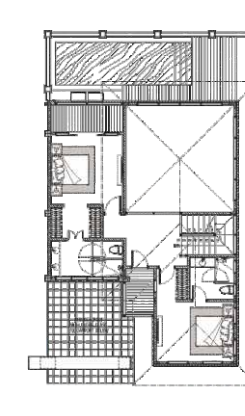


UPPER FLOOR

- 3 Bedroom unit
- 181.73 - 214.7 sq. m (land area), 151 sq. m (building area)
- Spacious Living room
- Flooring : Living Room & Main Bathroom (Marble),
- Bedroom (Parquet Gracewood), Second Bathroom (Homogenous tile)
- 3 Bathroom
- AC : 3, water heater ready, internet & tv cable ready (installation only)
- Interior & Furniture not included



LOWER FLOOR



UPPER FLOOR

- 4 Bedroom unit
- 218.45 - 442.87 sq. m (land area), 228 sq. m (building area)
- Spacious Living room
- Flooring : Living Room & Main Bathroom (Marble),
- Bedroom (Parquet Gracewood), Second Bathroom (Homogenous tile)
- 4 Bathroom
- Spacious Balcony
- AC : 4, water heater ready, internet & tv cable ready (installation only)
- Interior & Furniture not included

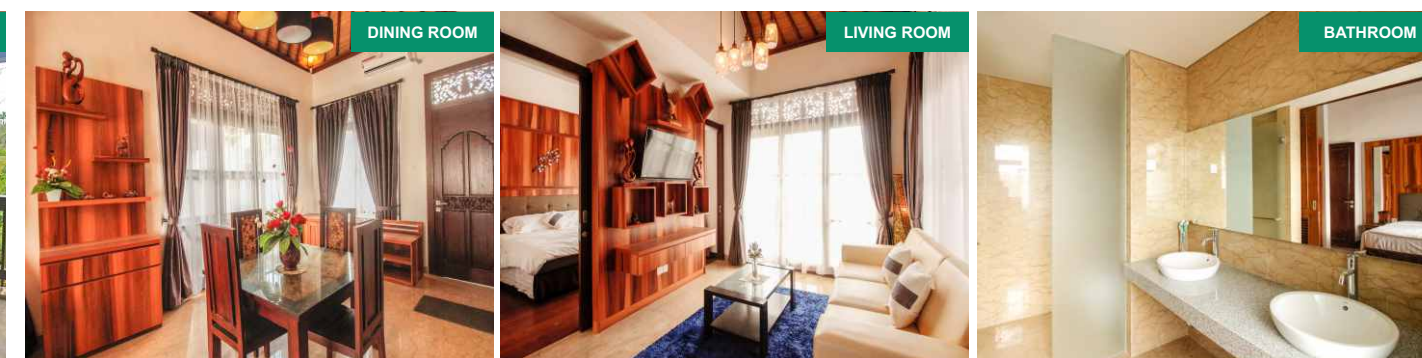


DINING ROOM

LIVING ROOM

BATHROOM

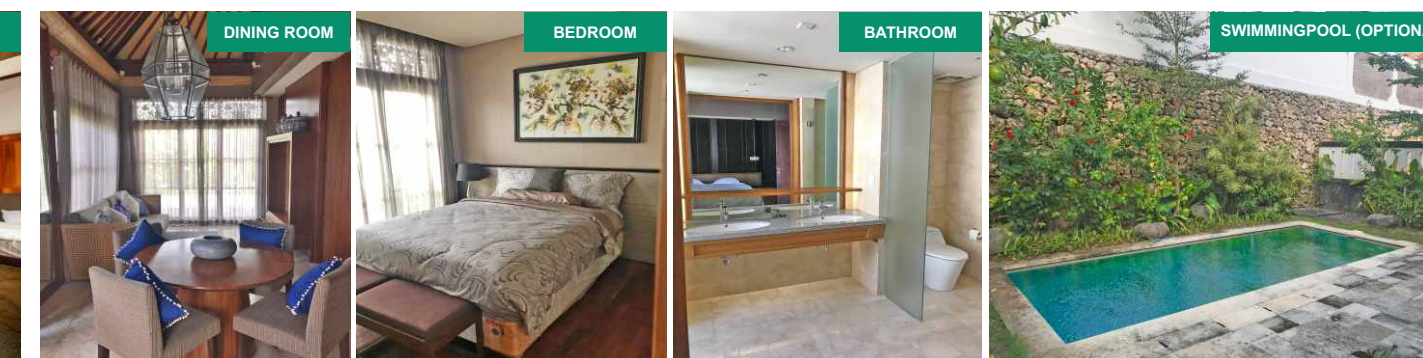
BALCONY



DINING ROOM

LIVING ROOM

BATHROOM

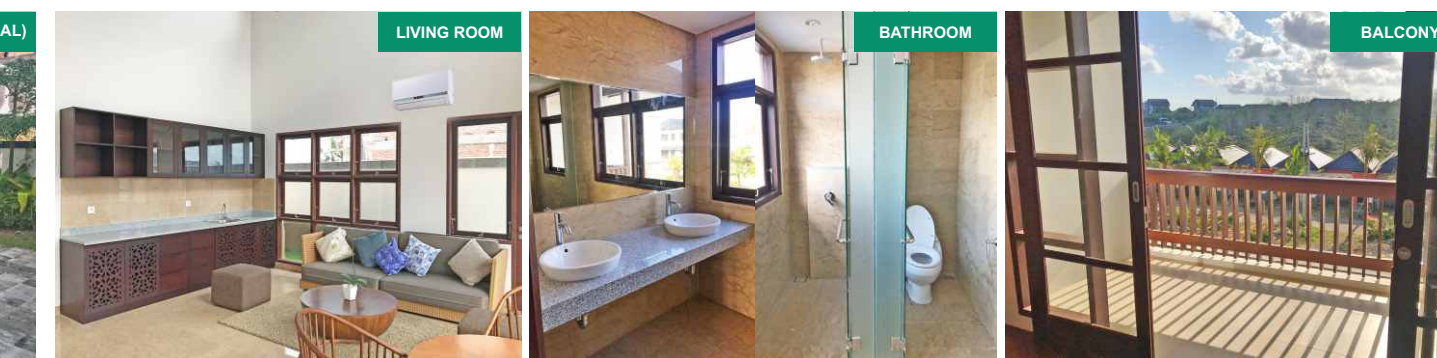


DINING ROOM

BEDROOM

BATHROOM

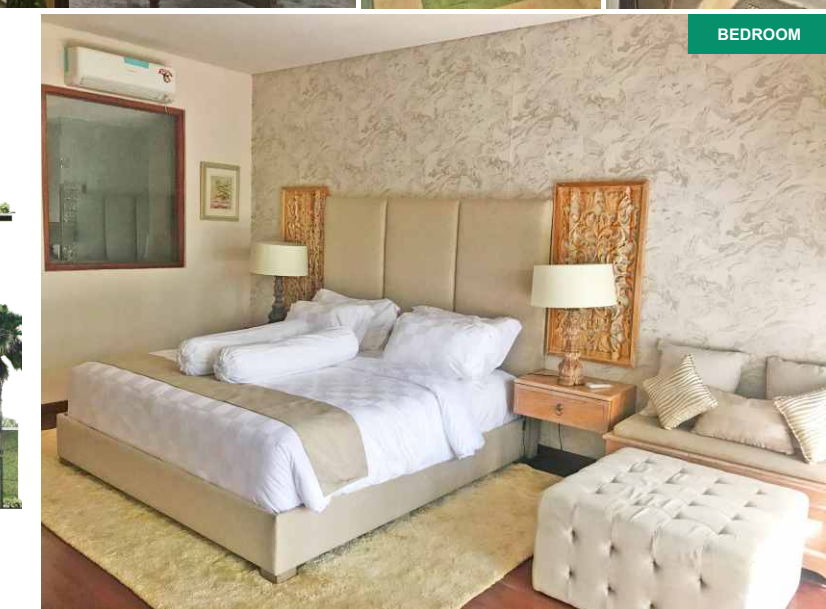
SWIMMINGPOOL (OPTIONAL)



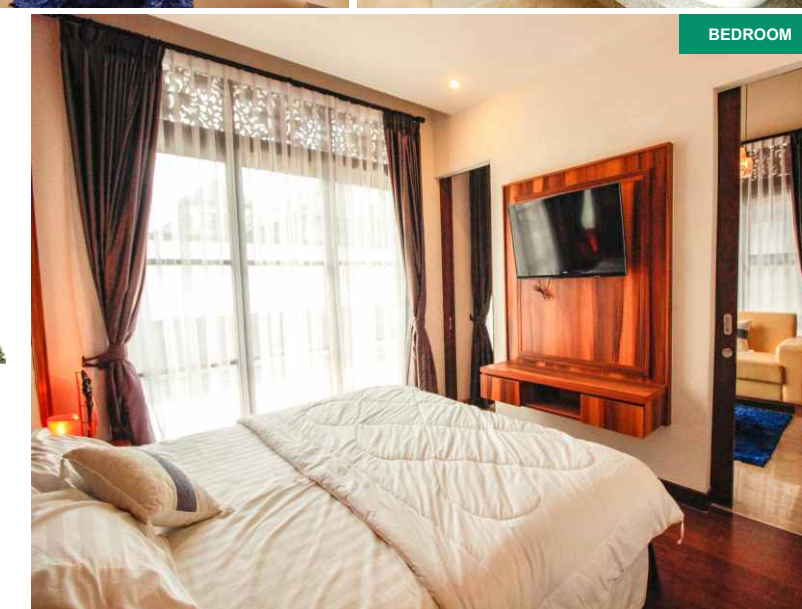
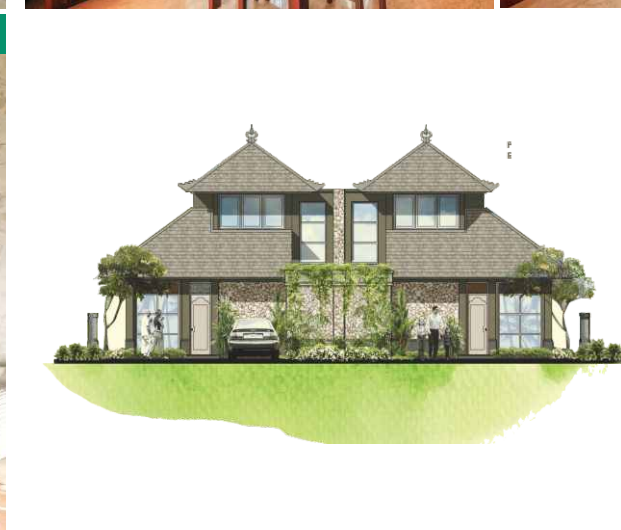
LIVING ROOM

BATHROOM

BALCONY



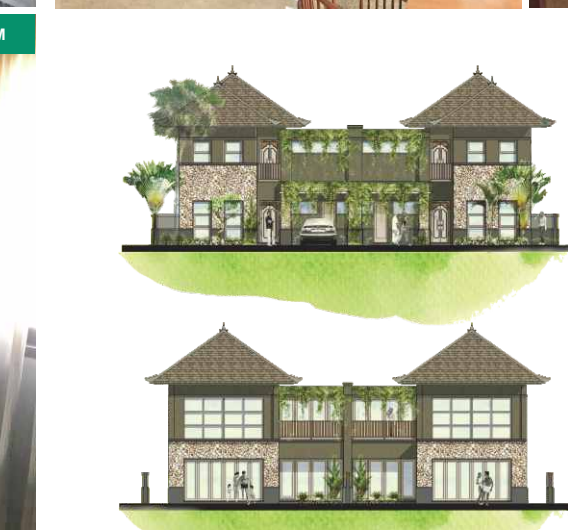
BEDROOM



BEDROOM



BEDROOM



BEDROOM